



FUSION[®]



**MARINE WIRED REMOTE
MS-NRX200**

ENGLISH

FUSION[®]

Specifications and design are subject to change without notice



WARNINGS AND CAUTIONS

Do not attempt to open the unit's chassis. There are no user-serviceable parts or adjustments inside. If exposed to direct sunlight or operated for extended periods, metal surfaces may become hot. Take care when handling.

CARE AND MAINTENANCE

As with all products with a chrome finish exposed to the harsh Marine environment, a little care will help to preserve the finish and prevent corrosion. Fusion recommends that you clean any salt water and/or salt residue from the remote with a damp cloth soaked in fresh water. Always fit the protective cover when not in use.

REGISTER YOUR PRODUCT ONLINE:

For your own peace of mind, register your product purchase online at www.fusionelectronics.com

We'll keep you up to date with any news related to your product, any software upgrades or new accessories to help you get the most from your product.

All FUSION True Marine Products are backed by a 3 Year Limited Consumer Warranty and by registering your product you can be assured that if the unexpected occurs we'll have your details and be ready to help.

RECORD YOUR PRODUCT DETAILS HERE:

MODEL NUMBER _____ DATE OF PURCHASE _____

AFFIX RECEIPT HERE

NOTES

.....
.....
.....
.....
.....
.....
.....
.....
.....
.....
.....
.....
.....
.....
.....
.....
.....
.....
.....
.....
.....
.....



NOTES

Dotted lines for taking notes.

CONTENTS

- **USER INTERFACE AND CONTROLS** pg 3
 - Control Panel Layout pg 3
 - Button function pg 3
- **INSTALLATION** pg 4
 - Standard FUSION Installation pg 4
 - NMEA2000 installation pg 5
- **MOUNTING** pg 7
 - Mounting diagram pg 7
- **OPERATION** pg 8
 - Power On/Off pg 8
 - Assigning the remote to a stereo pg 8
 - Volume adjustment pg 8
 - Backlight brightness pg 8
- **NMEA2000 OPERATION** pg 8
 - NMEA2000 Repeater mode pg 8
 - NMEA2000 Repeater sentences pg 11
- **FUSION TRUE MARINE** pg 12
- **NOTES** pg 13



USER INTERFACE AND CONTROLS

CONTROL PANEL LAYOUT



BUTTON FUNCTION



POWER

Press to turn the unit ON - (Stereo & Remote)

Press and hold for 2 seconds to power OFF - (Stereo & Remote)

MUTE

Press once to mute/un-mute audio



SOURCE

Press to cycle available sources



MENU

Press to enter menu system. Press to return to previous screen.



PLAY/PAUSE CURRENT TRACK



BACK/PREVIOUS

Short Press

Select the previous track.

Start tuning down the frequency spectrum. (Auto/Manual tuning mode) or previous preset (Preset mode).

Press and Hold

Rewind the current track.



FORWARD/NEXT

Short Press

Select the next track.

Start tuning up the frequency spectrum. (Auto/Manual tuning mode) or next preset (Preset mode).

Press and Hold

Fast forward the current track.



ROTARY ENCODER

Turn to adjust volume, move up or down a menu structure, or adjust a specific setting item.

Press

To select a highlighted option, confirm a setting.

FUSION TRUE MARINE

Recognised as the worldwide leader in marine entertainment and innovation, FUSION True Marine products combine cutting edge technology and high quality materials, with a clear focus on ease of use.

At FUSION, we believe that products should be designed to perform season after season even after exposure to some of the harshest marine conditions. With this longevity in mind, all True Marine products are designed and engineered from the ground up - specifically for use on the water.

Environmental protection is at the heart of all our product designs and only after each product has been subjected to (and passed) our rigorous environmental testing, are they awarded the True Marine stamp and a 3 Year Limited Worldwide Consumer Warranty.

Our extensive testing gives our customers confidence in our products and has further cemented FUSION as industry leaders in marine entertainment.



NMEA2000 REPEATER MESSAGES:

- 127250: Vessel Heading (Magnetic Heading, Correction, Deviation)
- 128259: Speed Water referenced (Speed Water, Speed Ground)
- 128267: Water Depth (Depth at transducer, transducer offset)
- 129025: Position Rapid Update (Latitude, Longitude)
- 129026: COG & SOG Rapid Update
- 129029: GNSS Position Data (Date, Time, Latitude, Longitude, Altitude)
- 130306: Wind Data (Speed, Direction, Reference)
- 130310: Environmental Parameters (Water Temperature, Outside Ambient Air Temp, Atmospheric pressure)
- 130311: Environmental Parameters (Deprecated) (Temperature Instance, Humidity Instance, Temp, Humidity, Atmospheric Pressure)
- 130312: Temperature (Instance, Source, Actual)
- 130314: Actual Pressure
- 130577: Direction Data (Course Over Ground, Speed Over Ground, Heading, Speed Through Water)
- 129284: Navigation Data (ETA)



INSTALLATION

To complete the ultimate marine audio experience MS-NRX200 Marine Wired Remote Controls can be installed throughout the vessel to provide full control of multiple FUSION Marine Stereos, creating flexible zone control and NMEA2000 monitoring solutions.

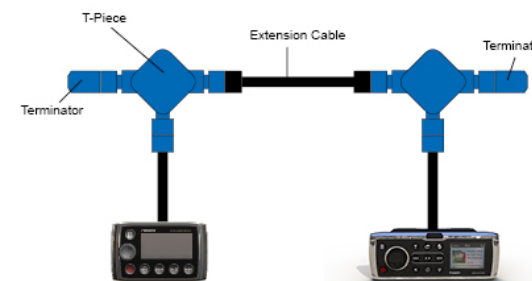
The MS-NRX200 is a plug and play device with two connection options. Connect the remote control to your FUSION Marine Stereo with the standard cable kit provided with your purchase or to a NMEA2000 network. Fusion NMEA2000 cable kits are available separately as a starter pack to create your own NMEA2000 network or connection pack for connecting to an existing NMEA2000 network. Refer to www.fusionelectronics.com for details

Note: If you install the remote control using the standard Fusion cable kit provided with the remote control, NMEA2000 repeater functions are not available.

STANDARD FUSION INSTALLATION - USING THE CABLE KIT SUPPLIED WITH YOUR NRX200 REMOTE CONTROL.

CONTENTS OF THE BOX

- 1 x 6M Extension Cable
- 2 x T-Connector
- 1 x Terminator (Male)
- 1 x Terminator (Female)



NOTE: The supplied Terminators must be fitted to the ends of the network as shown. Failure to do so will affect operation.

Optional Accessory: MS-WR600EXT6 - 6M Extension lead
MS-WR600EXT20 - 20M Extension lead

INSTALLATION OVER A NMEA2000 NETWORK.

As previously mentioned, the FUSION MS-NRX200 can be connected to a NMEA2000 network in two ways as described below.

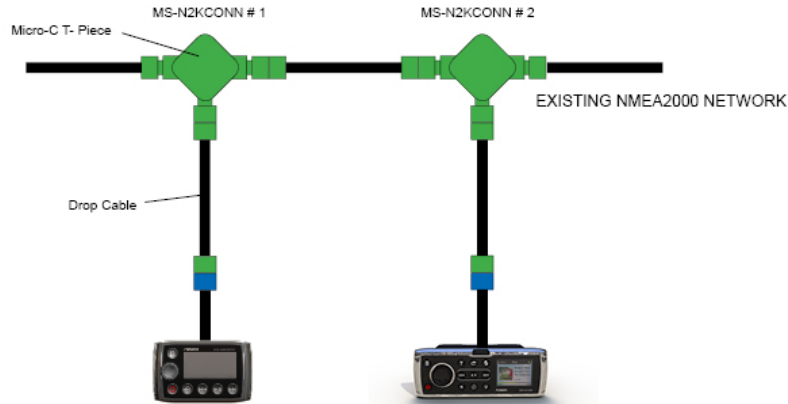
(a) Using an existing NMEA2000 Network.

An existing NMEA2000 network can be used to connect the remote control to your FUSION Marine Stereo. The Fusion cable kit MS-N2KCONN will be required for each Fusion device connected to the NMEA2000 network.

MS-N2KCONN - NMEA2000 Connection Pack


1 x NMEA2000 T-Connector

1 x Drop Cable, FUSION to NMEA2000 Micro-C




POWER ON/OFF - NMEA2000 REPEATER MODE

If the remote control has been configured to display NMEA2000 data sentences it can be turned on independently of the FUSION Marine Stereo. This permits the user to monitor NMEA data without turning on the stereo.

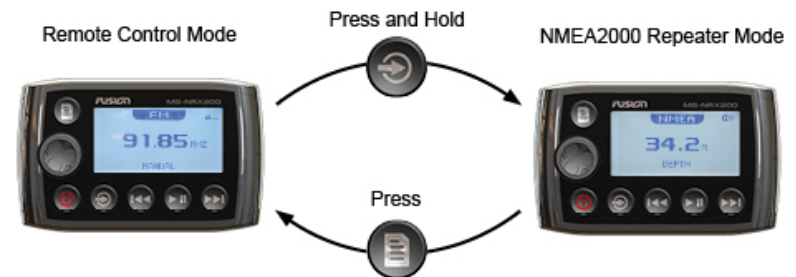
Press  to turn on the remote control. The remote control will enter NMEA2000 repeater mode and will NOT turn on the stereo. The stereo can be turned on from the remote control by pressing the Menu key to exit the NMEA2000 repeater mode. To return to the repeater mode press and hold the Source key.

When in NMEA2000 repeater mode the remote will monitor the state of the stereo. If the stereo is turned on then the remote will allow the user to change volume and mute the stereo, play, pause and skip track (back and forwards) without leaving NMEA2000 repeater mode.

TURNING ON THE REMOTE CONTROL WITH THE MARINE STEREO TURNED ON

Press  to turn ON the remote control. It will detect the stereo is on and enter the remote control mode.

CHANGING REMOTE CONTROL MODE



The NRX200 remote control can be configured to display NMEA2000 network data, the following options are available:

- Wind Direction
- Wind Speed
- Depth
- Speed over Ground
- Speed through Water
- Heading
- Position
- Water Temperature
- Atmospheric Pressure
- ETA

SELECTING THE DISPLAY METHOD

The remote control can be configured to automatically cycle through the selected NMEA2000 data. Press the 'Menu' button and select 'SETTINGS' > 'NMEA Monitor' > 'CYCLE SCREENS'. Select from the following options. Press the 'Menu' button to exit.

- Off
- 2 seconds
- 5 seconds
- 10 seconds

SELECTING UNITS OF MEASURE

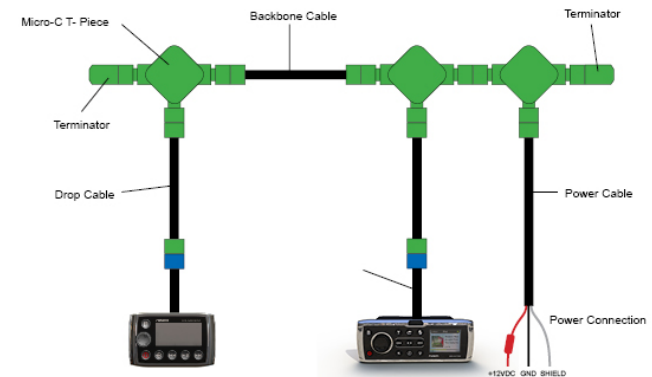
Press the 'Menu' button and select 'SETTINGS' > 'NMEA Monitor' > 'SET UNITS'. Select from the following options. Press the 'Menu' button to exit.

Distance: KM, Miles, Nautical Miles, Metres, Feet
Speed: KM/H, MPH, KTS, M/S
Depth: Metres, Feet, Fathoms
Temperature: °C, °F

(b) New NMEA2000 Network
Fusion provides a NMEA2000 Starter Kit MS-N2KSTART for creating a new NMEA2000 network on your vessel.

MS-N2KSTART - NMEA2000 Starter Pack

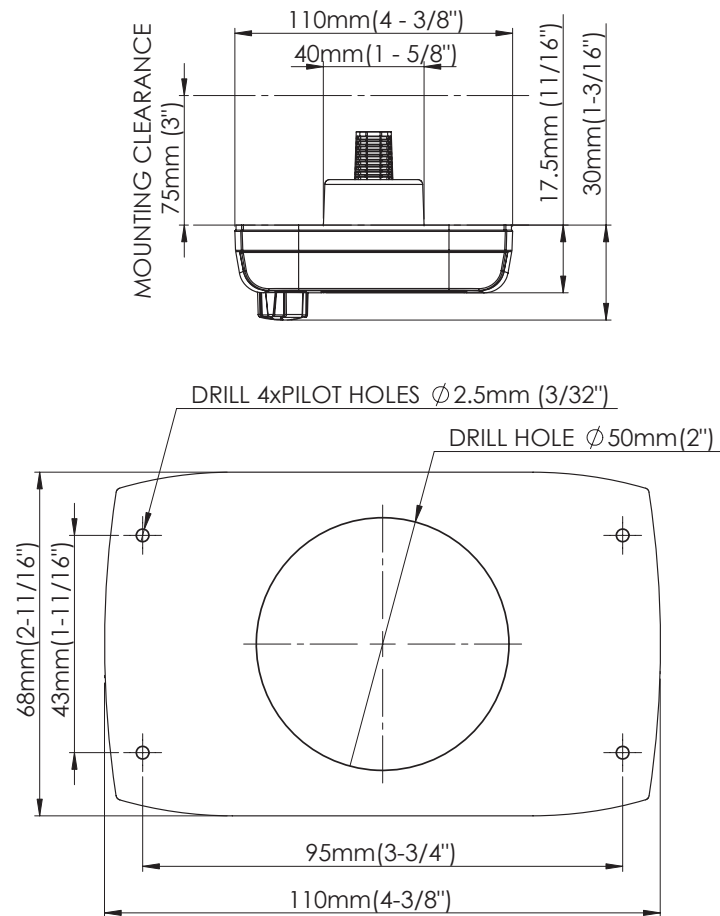
- 3 x NMEA2000 T-Connectors
- 1 x Terminator Micro C - Male
- 1 x Terminator Micro C - Female
- 1 x NMEA2000 Power Cable
- 2 x Drop Cable, FUSION to NMEA2000 Micro-C
- 1 x 6M Backbone Cable, Micro C Male - Female



Note: The supplied Terminator must be fitted to the ends of the network as shown. Failure to do so will effect operation.

Optional Accessory: MS-N2KEXT6 - 6m extension lead
MS-N2KEXT20 - 20m extension lead

MOUNTING DIAGRAM (NOT TO SCALE)




7

OPERATION

POWER ON/OFF

Press  to turn on the remote control. The FUSION Marine Stereo will power on if currently OFF.

Note: If the remote control is configured to display NMEA2000 data sentences the power on sequence becomes a two-step process. See 'NMEA Repeater Mode' below.

Press  to MUTE the audio when the stereo is ON.

Press and hold  to turn the stereo OFF.

ASSIGNING THE REMOTE TO A STEREO

Press the 'Menu' button and select 'SETTINGS' > 'STEREO'. Select the desired stereo from the list of available devices on the network. Press the 'Menu' button to exit.

VOLUME ADJUST

Turn the 'Rotary Encoder' to adjust volume levels. Refer to the FUSION Marine Stereo user manual for details on how to select zones.

BACKLIGHT BRIGHTNESS

Press the 'Menu' button and select 'SETTINGS' > 'LCD'. Turn the 'Rotary Encoder' to adjust Brightness or Contrast. Press the 'Rotary Encoder' to step between Brightness and Contrast. Press the 'Menu' button to exit.

After a period of inactivity the remote turns off the display backlight (Default). To disable this function Press the 'Menu' button and select 'SETTINGS' > 'DIM BACKLIGHT'. Press the 'Rotary Encoder' to enable/disable the function. Press the 'Menu' button to exit.

NMEA2000 OPERATION

NMEA2000 REPEATER MODE

SELECTING NMEA2000 DATA SENTENCES TO DISPLAY

Press the 'Menu' button and select 'SETTINGS' > 'NMEA MONITOR'. Select the NMEA data to be displayed from the list of available data. Press the 'Menu' button to exit.

8