

MILENNIA



MIL-MR380

CD/MP3/SD/MMC/USB PLAYER WITH FM/AM TUNER

OPERATING INSTRUCTION

Safety Information

PRECAUTIONS

- Use only in a 12-volt DC negative-ground electrical system.
- Disconnect the vehicle's negative battery terminal while mounting and connecting the unit.
- When replacing the fuse, be sure to use one with an identical amperage rating. Using a fuse with a higher amperage rating may cause serious damage to the unit.
- DO NOT attempt to disassemble the unit. Laser beams from the optical pickup are dangerous to the eyes.
- Make sure that pins or other foreign objects do not get inside the unit, they may cause malfunctions, or create safety hazards such as electrical shock or laser beam exposure.
- If you have parked the car for a long time in hot or cold weather, wait until the temperature in the car becomes normal before operating the unit.
- Keep the volume at a level at which you can hear outside warning sounds (horns sirens, etc.).

CD Notes

- Playing a defective or dusty CD can cause dropouts in sound.
- Hold CDs as illustrated.
- Do not touch the unlabeled side.
- Do not attach any seal, label or



data protection sheet to either side of a disc.

- Do not expose a CD to direct sunlight or excessive heat.
- Wipe a dirty CD from the center outward with a cleaning cloth.
- Never use solvents such as benzine or alcohol.
- This unit cannot play 3-inch (8cm) CDs. NEVER insert a 3-inch CD contained in the adapter or an irregularly shaped CD. The unit may not be able to eject it, resulting in a malfunction.

Before Operation

- Do not raise the volume level too much, as this will block outside sounds, making driving dangerous.
- Stop the car before performing any complicated operation.

CAUTION

- DO NOT open covers and do not repair yourself. Consult the dealer or an experienced technician for help.

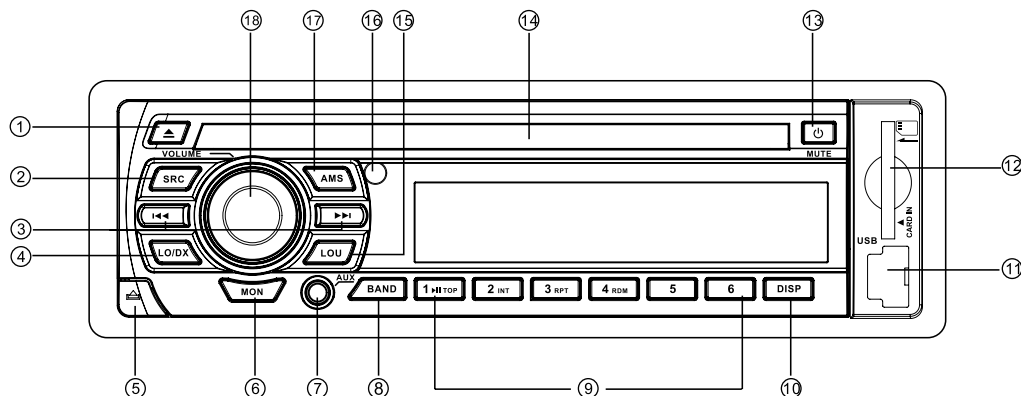
* In addition to ordinary CDs, this unit can playback a CD-R or CD-RW, MP3.

Contents

Safety Information	2
Panel Controls	3
Button Tips	4
USB/SD/MMC MP3 Playback.....	4
MP3 Overview	5
MP3 Playback.....	5-6
Menu Function.....	6
Electrical Connections	7
Installation Guide.....	8
Anti-Theft System	9
Troubleshooting.....	9-10
Specifications	10

Panel Controls

Power on : Press  button to turn on the unit.



- | | | |
|---|--|--|
| <ul style="list-style-type: none"> 1. - Disc eject 2. SRC <ul style="list-style-type: none"> - Radio - Disc play (when disc inserted) - USB (when USB connected) - Card (when SD/MMC card inserted) - Aux-in 3. - Radio tune - Track seek 4. - Radio local/distant 5. - Panel release 6. - FM stereo/mono 7. - Aux-in jack 8. - Band switch:
FM1,FM2,FM3,AM1(MW1),AM2(MW2) | <ul style="list-style-type: none"> 9. Disc playback <ul style="list-style-type: none"> - Button 1: Play/Pause
Top play (press more than 2 sec.) - Button 2: Intro play (10 sec.) - Button 3: Track repeat play - Button 4: Track random play - Button 5: - MP3 folder down (If there are more than 1 folders)
- MP3 track -10 down (long press) - Button 6: - MP3 folder up (If there are more than 1 folders)
- MP3 track +10 up (long press) Radio preset 1~6 <ul style="list-style-type: none"> - Press to tune in a preset station. - Hold for more than 2 seconds to store station. | <ul style="list-style-type: none"> 10. - Time display/adjust 11. - USB connector 12. - SD/MMC card slot 13. - Power on / off (long press) <ul style="list-style-type: none"> - Mute 14. - Disc slot 15. - Loudness 16. - Remote sensor 17. - AMS: Radio preset scan/Radio auto preset <ul style="list-style-type: none"> - SEARCH: MP3 track/file/character search 18. - Rotate the knob to adjust volume level. <ul style="list-style-type: none"> - Push to select VOL/BAS/TRE/BAL/FAD, rotate the knob to adjust level. - Press more than 2 seconds to enter menu mode. |
|---|--|--|

Button Tips

AMS : Auto Memory Store

Press briefly to scan the preset station 1-6 for 5 seconds each. Hold more than 2 seconds, the 6 strongest available station will be automatically saved in the memory of preset button 1-6.

BUTTON SKIP

Radio: Press [] button to tune in the station that you have known its frequency. Hold [

Disc playback: Press [

SET CLOCK

Press DISP button, time displays. Press again more than 2 seconds, time display blinks. Rotate the knob to set time. Press DISP to confirm.

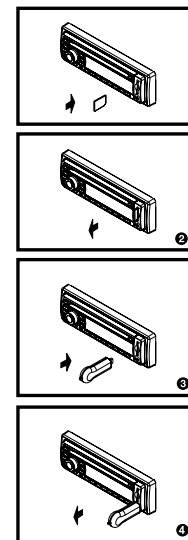
USB/SD/MMC MP3 Playback

1. Loading SD/MMC Card
Insert the SD/MMC card into the slot, with the front side at right. The unit will play the music automatically and the LCD will show CARD.
2. Take out SD/MMC Card
Push SRC button and switch to non CARD mode, slight press SD/MMC card, take out the card when it was pop out.
3. Loading USB equipment
Open the rubber cap, insert the USB into the connector and the unit play the music in the USB storer automatically, and the LCD will show USB.
4. Take out USB equipment
Push the SRC button and switch to non USB mode, then take off the USB storer, close the rubber cap.

USB/SD/MMC Notes

USB functions (flash memory type) MP3 music play

1. SD/ MMC card support.
2. USB flash memory 2 in 1 (SD/MMC) support.
3. Fat 12/fat 16/fat 32 is possible.
4. File name : 32 byte/dir name : 32 byte/tag name : 32 byte
5. Tag (ID3 tag ver 2.0)
 - title/artist/album : 32 byte support.
6. Multi card reader not support.
7. USB 1.1 support, USB 2.0 support (It can not support USB 2.0 speed. Just, get the same speed with USB 1.1).
Not all kinds of USB devices are compatible with the unit.



MP3 Overview

MP3 Overview

- MP3 is short for MPEG Audio Layer 3 and refers to an audio compression technology standard.
- This product allows playback of MP3 files on CD-ROM CD-R or CD-RW discs.
- The unit can read MP3 files written in the format compliant with ISO 9660. However it does not support the MP3 data written by the method of packet write.
- The unit can not read an MP3 file that has a file extension other than ".mp3".
- If you play a non-MP3 file that has the ".mp3" extension, you may hear some noise.
- In this manual, we refer to what are called "MP3 file" and "folder" in PC terminology as "Track" and "Album", respectively.
- Maximum number of directory level is 8, including the root directory. Maximum number of files and folders per disc is 1000.
- The unit may not play tracks in the order of track numbers.
- The unit plays only the audio tracks if a disc contains both audio tracks and MP3 files.
- When playing a disc of 8kbps or VBR*, the elapsed playing time in the display window will not be correct and also the intro play may not function properly. *VBR: Variable Bit Rate.

Note on creating your own CD-Rs or CD-RWs containing MP3 files

- To enjoy high quality sound, we recommend converting to MP3 files with a sampling frequency of 44.1 kHz and a fixed bit rate of 128 kbps.
- DO NOT store more than 1000 MP3 files per disc.
- For ISO 9660-compliant format, the maximum allowable depth of nested folders is 8, including the root directory(folder).
- When CD-R disc is used, playback is possible only for discs which have been finalized.
- Make sure that when MP3 CD-R is burned that it is formatted as a data disc and NOT as an audio disc.
- You should not write non-MP3 files or unneeded folders along with MP3 files on the CD-R otherwise it takes a long time until the unit starts to play MP3 files.
- With some CD-R media, data may not be properly written depending on their manufacturing quality. In this case, data may not be reproduced correctly. High quality CD-R disc is recommended.
- Up to 16 characters are displayed for the name of an Album or a Track. ID3 TAG version 1.x is required.
- Note that the unit may not play tracks in the order that you wrote them to the disc.

MP3 Playback

Display Information

During playback, ID3 tag information display scrolling on the screen: FOLDER, FILE, ALBUM, TITLE, ARTIST and Track Number/Elapsed Time.

Folder Up/Down

Press the 5/DN button to go to the previous folder. Press the 6/UP button to go to the next folder.

Direct Song/File Access

1. Press the AMS button once and press the knob to enable direct track searching.
2. Rotate the VOL/MENU control to select a digit.
3. Press the VOL/MENU control to confirm entry and the tens digit will flash.
4. Rotate the VOL/MENU control to select digit.
5. Repeat above steps to enter the hundreds and thousands digit, if necessary.
NOTE: The unit will only allow the selection of digits that correspond with the number of files on the media you are searching.
6. Once the track number appears on the screen, long press the VOL/MENU control to play the selected song/file.

MP3 Playback (continued)

Searching Folders/Files

1. Press the AMS button twice and press the knob to access the file search option.
2. Rotate the VOL/MENU control to select the desired directory/song.
3. Press the VOL/MENU control to view the files inside the selected directory.
4. Rotate the VOL/MENU control to select the song/file. Long press the VOL/MENU control to play the selected song/file.

Searching by Name (CHAR-SCH)

1. Press the AMS button three times and press the knob to access the character search option.
2. Rotate the VOL/MENU control to select the characters A-Z, _ , - , + , and 0-9 for the first character.
3. Press the VOL/MENU control to confirm entry of the character and move to the next position.
4. Repeat for up to eight characters.
5. Press and hold the VOL/MENU control for 2 seconds to begin the search.
6. If a directory is found, rotate the VOL/MENU control to select the song/file in this directory/folder.
7. Press and hold the VOL/MENU control for 2 seconds to play the selected song/file. "NO MATCH" appears if there is no file beginning with the search string entered.

Menu Function

Press the knob more than 2 seconds to enter menu mode , then each press changes the mode as follows:

DSP mode -> ESP mode -> MULT ON/OFF -> BEEP ON/OFF -> SEEK1/2 mode (only in tuner mode) -> VOL mode -> 12/24 HOURS mode

DSP mode:

Rotate the knob to choose DSP sound effect:
POP->ROCK->CLASSIC->FLAT-> DSP OFF

ESP mode:

ESP 12s: Selected as CD-ESP time 12 seconds, MP3-ESP time >100 seconds.

ESP 45s: Selected as CD-ESP time 45 seconds, MP3-ESP time >100 seconds.

MULT ON/OFF:

Multi Session ON/OFF. (Multi session OFF: mixed CD, ONE session CD; Multi session ON: Mixed, Extra, multi session CD)

BEEP ON/OFF:

Rotate the knob to choose beep sound on or off.

SEEK 1/2 mode:

Rotate the knob to choose radio seek mode 1 or 2 .

SEEK 1: Searching station will stop when next station is received.

SEEK 2: Searching station will stop when ◀◀ or ▶▶ button is released and next station is received.

VOL mode:

VOL LAST: the turn-on volume level is the volume level of latest power off.

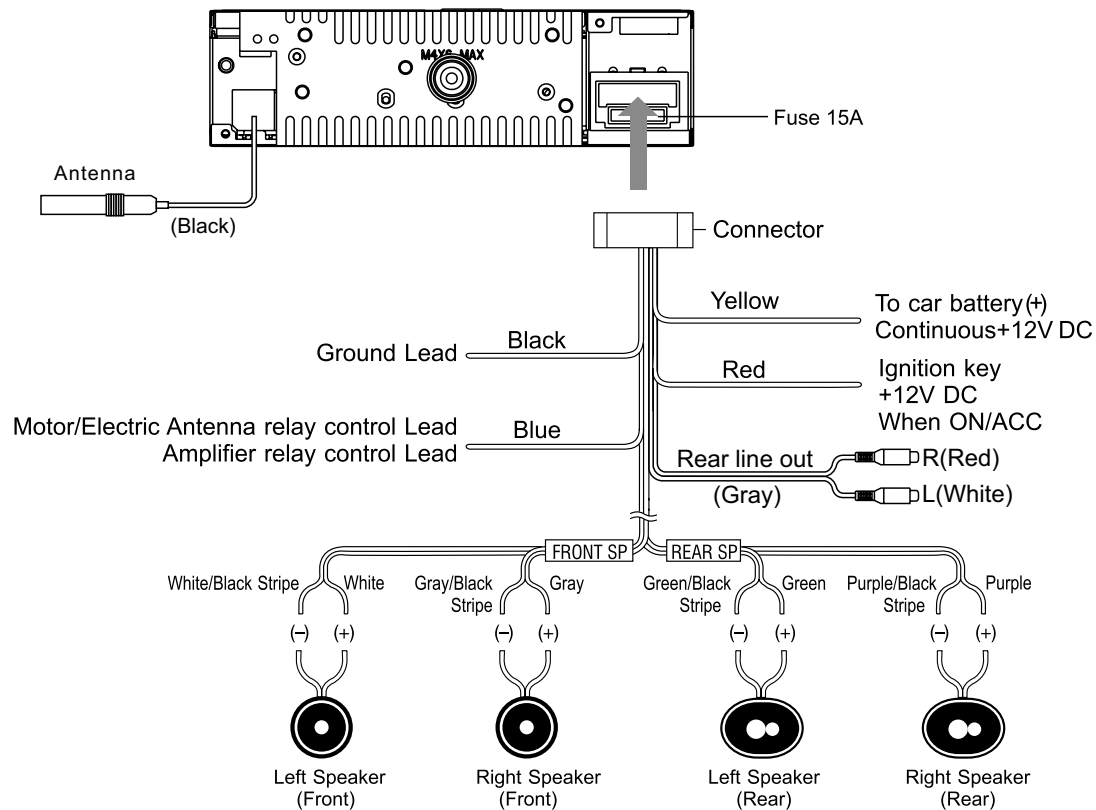
VOL ADJ: At volume adjust mode, press the knob to enter A-VOL mode, then rotate the knob to set the turn-on volume level.

12/24 HOURS mode:

Rotate the knob to select 12 or 24 HOURS time format.

Electrical Connections

Wiring Diagram



Installation Guide

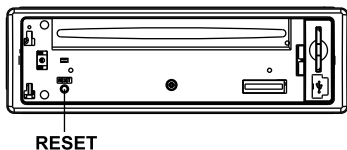
Installation Procedures

First complete the electrical connections, and then check them for correctness.

Reset

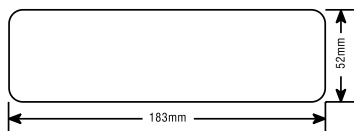
Press the RESET button with a pointed object to reset the unit to the original status.

Note: Press the RESET button will erase the clock setting and stored stations.

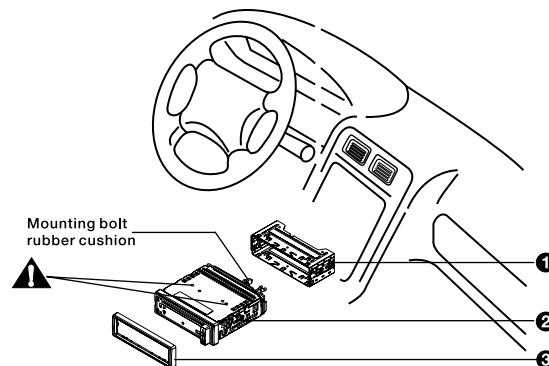


Installation Opening

This unit can be installed in any dashboard having an opening as shown below. The dashboard should be 4.75mm - 5.56mm thick in order to be able to support the unit.



Important:
Remove these two screws before installation. Otherwise, the player will not work.



1. Insert mounting collar into the dashboard, and bend the mounting tabs out with a screwdriver.

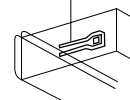
Make sure that lock lever(※) is flush with the mounting collar. (Not projecting outward)

2. Secure the rear of the unit.

After fixing mounting bolt and power connector, fix the rear of the unit to the car body by rubber cushion.

3. Insert trim plate.

Lock lever(※)

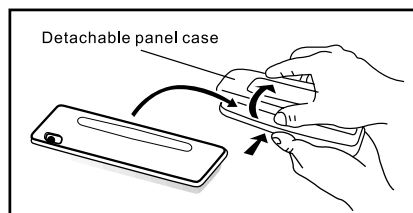


Anti-Theft System

This unit is equipped with a detachable panel. Removing this panel makes the radio totally inoperable.

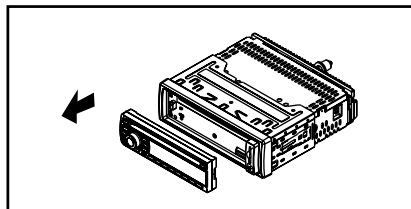
Remove the detachable panel

1. Switch off the power of the unit.
2. Remove the detachable panel.
3. Gently press the button of the case and open the cover. Place the panel into the case and take it with you when you leave the car.



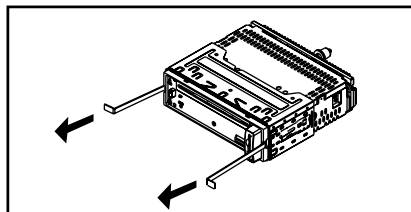
Install detachable panel

1. Fix right part of face plate in the right part of panel slot of the unit.
2. Press down the left side of the face plate until it clicks into the panel slot of the unit.



Remove the unit

1. Switch off the power of the unit.
1. Remove the panel and the trim plate.
2. Insert both L-Keys into the hole on the front of the set until they lock.
3. Pull out the unit.



Troubleshooting

If you suspect something is wrong, immediately switch power off. Do not use the unit in abnormal condition, for example without sound, or with smoke or foul smell can cause fire or electric shock. Immediately stop using it and call the store where you purchased it. Never try to repair the unit yourself because it is dangerous to do so.

General

No power or no sound
Car's engine switch is not on. Turn your car's key to ACC or ON.
Cable is not correctly connected. Check connection.
Fuse is burnt. Replace fuse.
Check volume or mute on / off.
If the above solutions cannot help, press the RESET button.

Radio

Much noise in broadcasts.
Station is too far, or signals are too weak.
Select other stations of higher signal level.
Preset station lost.
Battery cable is not correctly connected.
Connect the battery cable to the terminal that is always live.

Troubleshooting (continued)

Disc

Disc is inside but no sound.
Disc is upside down.
Place disc in the correct direction, and the label side up.
Disc is dirty or damaged.
Clean disc or change another disc.
Disc sound skips, tone quality is low.
Disc is dirty or damaged.
Clean CD or change another CD.
Sound skips due to vibration.
Mounting angle is over 30°.
Adjust mounting angle to less than 30°.
Unstable mounting.
Mount the unit securely with the mounting parts.

Specifications

General

Power supply: 12V DC(11V-16V)
Test voltage 14.4V,
negative ground
Maximum power output: 45Wx4 channels
Continuous power output: 20Wx4 channels (4Ω,
10% T.H.D.)
Suitable speaker
impedance: 4-8 ohm
Pre-Amp output voltage: 2.0V (CD play mode: 1KHz,
0 dB, 10 KΩ load)
Fuse: 15A
Dimensions(WxHxD): 178x50x155mm
Weight: 1.8kg
Aux-in: ≥300mV

FM Stereo Radio

Frequency range: 87.5-108.0 MHz
Usable sensitivity: 8 dBμ
Quieting sensitivity
(S/N=50dB): 12 dBμ
Frequency response: 30Hz-15KHz
Stereo separation: 30dB(1KHz)
Image response ratio: 50dB
IF response ratio: 70dB
Signal/noise ratio: 55dB

MW(AM) Radio

Frequency range: 522-1620 KHz
Usable sensitivity
(S/N=20dB): 30 dBμ

Disc Player

System: Disc digital audio
system
Frequency response: 20Hz-20KHz
Signal/noise ratio: >80 dB
Total harmonic distortion: Less than 0.20%
(1kHz)
Wow and flutter: Below measurable
limits
Channel separation: >55 dB

Components

Mounting collar	1
Machine screws M5x6mm	4
Mounting bolt (50mm)	1
Removable face plate case	1
Trim plate	1
L-key	2
Operating instructions	1
Rubber cushion	1

Note: Specifications and the design are subject to change without notice due to improvements in technology.

PN: 127075012328